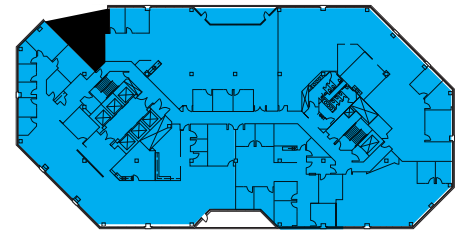
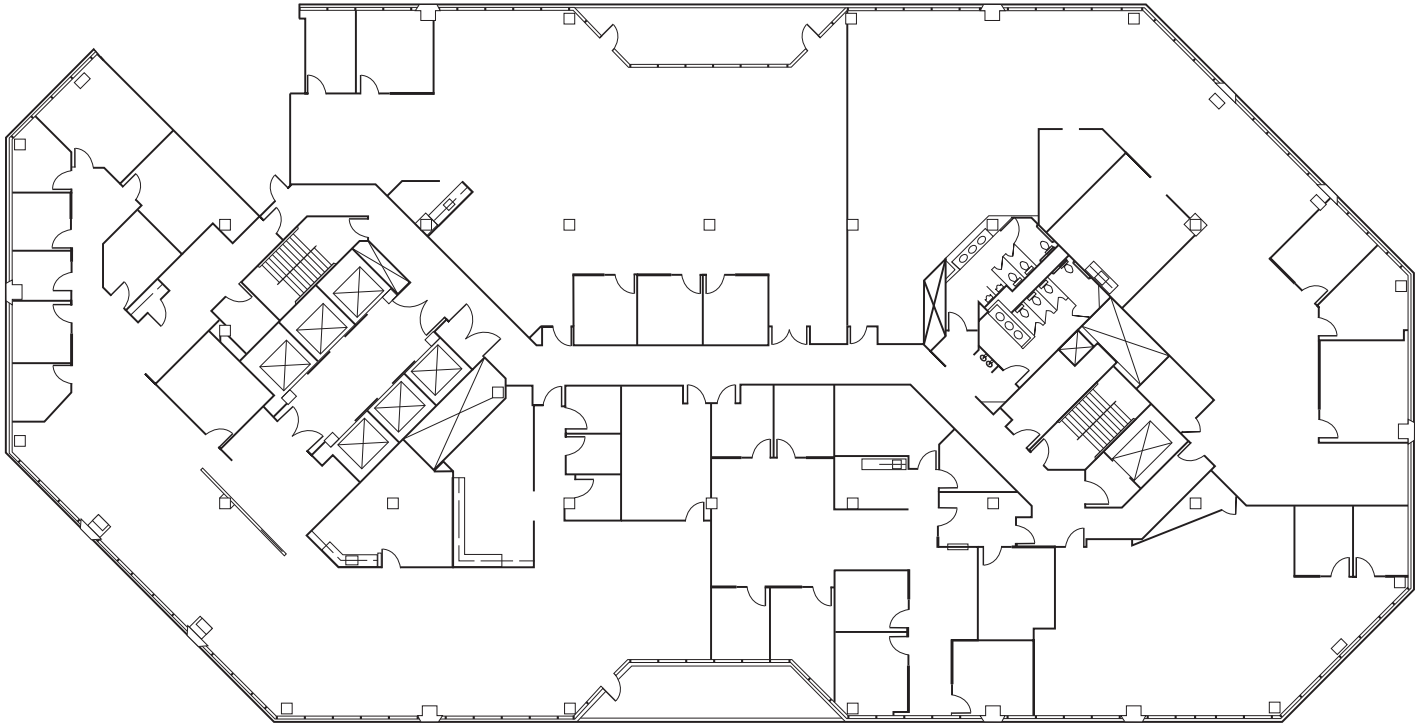


Suite 400+430+440+450+460 ±25,778 RSF



Breck Lutz (925) 324-6321 breck.lutz@nmrk.com CA RE License #00936859

Alex Grell (510) 918-5236 alex.grell@nmrk.com CA RE License #01222891

NEWMARK

1333 N. California Blvd, Suite 343 | Walnut Creek, CA 94596
www.nmrk.com

The distributor of this communication is performing acts for which a real estate license is required. The information contained herein has been obtained from sources deemed reliable but has not been verified and no guarantee, warranty or representation, either express or implied, is made with respect to such information. Terms of sale or lease and availability are subject to change or withdrawal without notice. MP-504 // 03.24